

# Winding

We Know

# Better



Indigenous Complete Range of Spares  
for High Speed Winding Machine

# AUTOCONER MACHINE SPARES

Schlafthorst Auto Coner  
138 / 238 / 338



Murata Mach Coner  
7II / 7V / 21C



Savio Auto Coner  
RAS15 / ESPERO-L / ORION





32530-17  
Brake Brush



30107-5 Switch  
Housing AC 238



30107-5  
Slider



30105- Switch  
Section AC 238



32530 & 20 Brake Fling  
With Brake Lining



30360-7  
Drum



30107-12  
Cover



30105-9 Indicator  
Unit AC 238



32501 - 42  
Cam Piece



30380 15 & 17  
Deflection Plate



33045-9 Scissors  
Housing



30310-20 Grooved  
Ball Bearing AC 238



30115-11 Toothed  
Segment



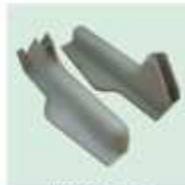
33001-60 Gear Box  
Housing AC 338



27050-4  
Magazine Carrier



32530-18 Fastening  
Piece AC 338



27050-9 & 13  
Magazine Half



32510-34 Opener  
ARM AC 238



33001 Pilot Motor  
Toothed Wheel 12T/80T



32535 10 Cap &  
36301-50 Carrier



22010-58  
Hose Connector



33005-34  
Toothed Segment



20235-115 Connecting  
Tube AC 238



33015-13  
Suction Tube



37701 - 84  
Suction Tube



37701 - 82  
Suction Tube



37701-7, 20 & LID  
Bearing AC 238 & 338



37701-104, 7, 20 Swivel LID  
& LID Bearing AC 238 & 338



40105-10 Hollow  
Shaft AC 238



38101-33 Unwinding  
Accelerator AC 238



33005-832698009  
Suction Tube



34101-146001757  
Spring



34101-146004520  
Spring



33101-852130045  
Valve



40105-146015543  
Tension Disc



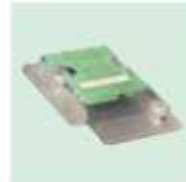
Circuit Board



42001-146001641  
Yarn Trap



40102-146011776  
Tension Disc



34101-146016771  
Guide Bush



33020-146015415  
Comb Strip



34101-146017582  
Fastening Piece



37701-146015350  
Swivel Lid



37701-146004704  
Lid Bearing



33001-60  
Gear Box



30105-146014720  
Indicator Unit with PCB



34101-146016316  
RH Adpoter



42001-146001641  
Tube Clamp



37201-146013264  
Control Lever



34101-146017389  
Break Ring with  
Magnet Ring



34101-146007020  
Brake Bush



33060/146011414  
Support



35021-146012034  
Bobbin Peag



33005-832698009  
Cam Follower Bearing



30380-146009313  
Deflection Plate



Motor



56801-146010369  
Cover 16mm



33060/146002221  
Coupling Gear



40102-146001567  
Toothed Wheel



41501-146015415  
Cutting Knife



32530-148003449  
Break Bush



32530-148014829  
Break Lining



36001-148020205  
33050-148012893  
Tension Disc



56801-146012426  
56801-146006265  
Scissors Blade



32580-148014846  
Break Ring



30395-148002469  
Brush Bar



32530-148003449  
Conveyor Belt



30380-148004031  
Deflection Plate



36801-148012572  
Leaf Spring



30105-148009808  
30105-148020117  
Operation Suction



56801-357 Distributor  
Distributor



36010-148004238  
Intermediate Piece



30120-148012775  
Damping



Sleeve



36001-886135006  
Stap Motor



Drive Shaft-338



33001-148011189  
Gear 86/12



33001-148020155  
Gear



33001-148004577  
Gear 80/12



33001-148020027  
Gear



56801-147021318  
DZ3/16,1E Prism



Holding Ring -238



36301-146014427  
Wax Disc



36801-148008070  
Lever



33001-48011607  
Plat



36801-148002205  
Pull Road



30380-147029285  
Deflection Plate



30125-146006901  
Clamping Lever



36001-886135006-1  
Stap Motor Gear



36801-148002204  
Full Road





37701-38 Bevel  
Gear AC 338



42501-37  
Nozzle



57701-11  
Cover AC 238



33050-11 Suction  
Pipe Shutter AC 338



34101-8 & 14 Guide Bush  
With Bearing Shaft



37701-43 Drive  
Lever AC 338



Brush 238 / 338



Toothed Wheel - 238



36801-280 Prism  
Cover 13mm 16mm



34101-35 Sensor  
S4 AC 238



34101-37 Brake Fling  
With Magnet



34101-77 Holding  
Rings AC 238



34101 & 34201 CPL  
Adaptors AC 238



36060-16-20 Scissor  
Blade AC 338



33801-246 Scissor  
Plate with Scissor



34201-10 Bearing  
51107



36060-78 Actuating  
Cam AC 338



35301-12  
Drive



40160-44 & 50  
Scissors Blade



42001-81-Pressure  
Fork AC 238



42001-107-Yarn Trap  
AC 238 & 338



Stopping Element  
238 & 338



42501-46 Nozzle  
Big AC 238



56801-105 Scissors  
Actuating Lever



56801-202 Air Duct  
AC 238



42030-9 & 14  
Toothed Wheel



40101 Toothed  
Wheel



Yarn Guide  
Rod AC 238



75001-162  
Roller



56801-433  
Coupling Half

# SCHLAFHORST AUTO CONER - 238 & 338



Belt Shifter  
COPL



80003 Caddy CPL  
With Bobbin Carrier



CPL Tube Adaptors  
For 138



35151-39  
Gear Wheel



Lifting Plunger  
238



Cam Follower  
Bearing



Trolley Wheel



Sensor  
238 & 338



33005 Cam Flower  
238



Rubber Sleeve  
338



Locking Ball  
238 Deluxe



33045/148018544  
Snap Lock



31601/146002249  
Guide Bar Set



30130/148013238  
Compesating Setting Lever



Presser Rod

## MURATA MACH CONER



008-580B-030  
Guide



008-570-013  
Reversing Roll



008-602-005-017-Cushion  
& Tenser Disc



Shifter  
Base CPL



008-604-005X & 008X



008-601 Yarn Trap  
Rubber Packing



008-603-007 & 8  
Cutter



008-604-004X  
Wax Push Lever



008-42A Guide  
Bush & Adaptor



D.U. Bushes

# MURATA MACH CONER



008-150P-001  
Filter



008-45B-067 Splicing  
Blast Cam S10



008-300-001 Drum  
Stay Shaft



008-310-022  
Plate



008-52A-15 & 18  
Trap Door



008-45B-054 Yarn Guide  
Stopper Cam S9



008-110-040  
Cover



008-330-006  
Drum Pelley



008-50A-008A  
Ratchet Wheel



008-50A-020 Ratch  
(Magazine Feed)



008-121-021 & 022  
Belt Guide



008-330-007  
Belt



008-45B-052X  
Lever S9



008-45B-046  
Lever



008-45B-042X  
Lever S7



008-170-002X  
Stopper



008-45B-019X  
Lever S2



008-220-008  
Trolley Wheel



008-45B-032  
Cam S4A



008-45B-005 Lower  
Guide Lever



008-45B-036X  
Lever S9



008-41B-006  
Handle



008-50A-028X



008-45B-040X  
Lever S6



008-330-028X  
Brake Shoe



008-330-032  
Drum



008-330-018-Brake  
Cam Lever



008-330-028  
Brake Lever



008-330-039  
Drum Lever



008-330-033X  
Drum Shaft

# MURATA MACH CONER



008-380-043X Lever  
(Shuttle Cutter Cam)



008-380-053X Lever  
Yarn Trap Cam



008-380-025  
Shutter Cutter Cam



008-380-021  
Reversing Roll Cam



008-380-024  
Memory Cam



008-390-003  
Drive Gear



008-410-11X  
Bearing Center



008-330-037  
Protector



008-380-039  
Spring Hook Plate



008-360-008  
Clamp Cover



33001-148020305



36010-148004238



30120-148012775



32530-146017582



36001-886135006



008-380-026  
Drum Start Cam



008-380-015X Opener  
Cam Lever



008-380-020  
Yarn Trap Cam



008-501-006  
Hose Joint



008-421-004  
Increase Road



008-430-001  
Cam Lever



008-553-047 & 48 Drum Rap  
Feeler & Feeler Tod



008-480-006 Holding  
Pipe 48mm & 60mm



008-540-016  
Gate Feeler Cam



008-530-013X  
Bobbin Ejector



008-471-006X  
Oil Damper



008-458-062X S10



008-530-003  
Connection Lever



008-451-009  
Cover Holder



008-480-081 & 82  
Cutter



# STAR VOLKMANN TFO



318-4 Friction Roller  
With Apron VTS 06S



318-2 Ball Bearing  
with Sleeve



313-29 Comb



319A-2 Feeder Spring  
for Console



341-1 Instant Lubrivist  
Assembly



313-21 to 31  
Yarn Stop motion Cpl



104-1 Duo-Belt  
Pulley CPL



111-14 Change  
Gear Stud



312-2 Bracket for  
Belt Guide Roller



315-3, 4, 5, Support  
RH, Middle, LH



303-11  
Centering Tube



309-7 Ballon Limitor



302-3 Brake  
Shoe Bakelite



120-3 & 4 Roll  
Right & Left



111-10 Flatchet Gear

# SCHLAFHORST AUTOCORO



117036910



117032378



10053-117011297



1093339



117027840



117014540



117016113



117003693



1084748



117048147



117039407



10145484



10134082



1088225



117030205



117004537



157768



139006838



139004905



139006335



117038482



117030926



139065290



117015902

# SAVIO ESPERO-L



14013.0061.3/0  
AS-0122-99



15099.0195.0/2  
AS - 0111-4



15320.0002.1/0  
AS-0020-5



16020.0714.1/0  
AS-0020-10



16291.0004.0/0  
AS-0181-18



15280.0055.0/0  
AS-0032-4/5



15252.001.2/0  
AS-0252-19



16016.0234.1/0  
AS-0111-10



15830.0008.1/0  
AS-0241-9



14810.0055.2/0  
AS-0181-21



16026.0101.2/0  
AS-0280-20



14026.0095.2/0  
AS-0271-98



16426.0075.1/0  
AS-0290-18



15141.0273.2/0  
AS-0311-8



14045.0074.1/0  
AS-0260-99



14201.0134.1/0  
AS-0032-99



16010.0070.0/0  
AS-0033-07



16806.0154.0/0  
AS-0033-08



14710.0028.0/0  
AS-0181-18



16026.0095.2/0  
AS-0241-9



16866.0168.0/0  
AS-0032-11



16766.0005.0/0  
AS-0191-4



14200.0178.1/0  
AS-0204-98



16105.0262.0/0  
AS-0032-15



16806.0154.0/0  
AS-0033-08



15830.0008.1/0  
AS-0241-9



15201.0002.1/0  
AS-0241-13



15140.0740.1/0  
AS-241-8



14200.0177.2/0



16310.00143.0  
AS-0185-2

# SAVIO ESPERO-L



14016.0077.0/0  
AS-0421-99



16020.0672.1/0  
AS-0500-10



4028.3022.02/0  
AS-0500-8



15535.0031.3/0



14820.0103.2/0  
AS-0531-98



16020.0673.1/0  
AS-0500-3



15026.0040.2/0  
AS-0510-1



15141.0267.2/0  
AS-0500-9



15026.0032.1/0  
AS-0490-10



15026.0027.1/0  
AS-0510-4



16010.0137.1/0  
AS-041106



15026.0043.1/0  
AS-0500-10



14210.0089.3/0  
AS-0441-99



15025.0030.0/0  
AS-0490-9



15640.0114.1/0  
AS-0452-1



16020.0723.1/0  
16020.0724.1/0



15210.0204.1/0  
AS-0441-12



16210.0665.0/0  
AS-0354-21



15526.00341/0  
AS-0452-6



16210.0664.0/0  
AS-0354-17



14200.0207.2/0  
AS-0351-97



4028.4229.15/0  
AS-0484-5



AS-0540-2



15526.0301.0/0  
AS-0452-12



14043.0015.3/0  
AS-0460-99



4028.4229.15/0  
AS-0484-5



AS-0452-9



15640.0162.1/0



14016.0103.0/0  
AS-0351-6



4028.4229.14/0  
AS-0484-5



# SAVIO ESPERO-L



4021.3049.01/0  
AC-2120-11



16526.0077.0/0  
AS-20601



4021.1150.16/0  
AS-3190-6



16526.0080.1/0  
AA-2120-2-2



AV-0130-19



4025.1410.11/0  
AV-3070-2



AS-0630-3



16-16.0142.1/0  
AS-0600-3



16016.0235.0/0  
AV-0110-35



16016.0238.1/0  
AS-0600-4



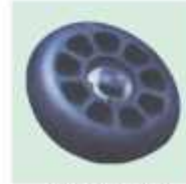
16141.0558.0/0  
AS-2160-5



16238.0018.1/0  
AV-0120-3



16526.0082.1/0  
AS-0600-9



14211.0156.0/0  
AV-2000-4



16146.0166.1/0  
AV-0110-37



16526.0085.0/0



16910.0741.2/0  
AS-0560-13



16106.0267.0/0



16016.0237.2/0  
AS-0600-2



16106.0047.0/0  
AS-0560-14



16526.0078.1/0  
AS-0570-7



15526.0036.0/0  
AV-0080-19



16526.0079.0/0  
AS-0551-5



14200.0254.1/0  
AV-0101-99



16026.0066.2/0  
AS-0551-14



15026.0034.0/0



15026.0039.1/0  
AV-0090-4



16910.0860.0/0  
AS-0551-4



15526.0024.0/0  
AV-0080.13



16556.0048.1/0  
AS-0581-13/15



# SAVIO ORION



15026.0074.0/0



14016.0101.1/0



15026.0078.0/0



15320.002.2/0



15020.0862.0/0



16140.3594.0/0



15201.0006.1/0



16020.0992.1/0



16526.0097.0/0



15526.0304.0/0



1646.1192.0/0



16860.0149.1/0



16526.0089.0/0



16806.0154.0/0



15296.0026.1/0



16126.0044.0/0



15105.0061.0/0



15026.0077.0/0



16016.0359.0/0



16016.0144.0/0



16016.0355.0/0



15020.0862.0/0



15021.0859.0/0



15020.0866.1/0



16406.0163.0/0



15220.0152.0/0



16806.0525.0/0



15210.0541.0/0



16426.0334.0/0



16141.0773.0/0

# SAVIO ORION



16736.0021.0/0



16026.0138.0/0



15076.0000.0/0



15260.0022.0/0



16016.0358.0/0



16020.1013.0/0



16020.0533.0/0



15210.0315.0/0



16016.0356.0/0



16026.0145.0/0



16016.0357.0/0



14013.0107.0/0



16526.0094.0/0



16020.1030.0/0



16106.0217.0/0



16026.0146.0/0



15426.081.0/0



15026.0073.0/0



16646.0927.0/0



15210.0312.0/0



15710.0051.0/0



15210.0047.0/0



16280.0214.0/0



15099.0614.0/0



15252.0011.0/0



15210.0312.0/0



16020.1013.0/0



16270.0416.0/0



16020.1125.0/0  
16020.1126.0/0



15710.0050.0/0



20-A-500A-32



21A-410-13X



21A-603B-001



21A-480-41



21A-520A-34



21A-425-2



21A-480-41



21A-520A-32



21A-627-4



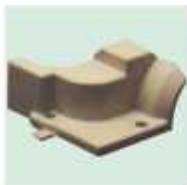
21A-608H-28



21A-370-02



21A-422-010



21A-520A-33



21A-603B-2



21A-608-9



21A-380-14



21A-408-41



21A-540-18



21A-520A-68



21A-480-40



21A-540-16



21A-480-46



21A-360-7



Ambica Engineers, located in Ahmedabad, specializes in the manufacturing of spares for most modern state-of-the-art winding machines like Murata Machconer and Schlafhorst Autoconer. The company is managed by Mr. Ramesh Panchal – a young enthusiastic with substantial exposure & techno-business expertise backed up by a team of well trained and highly skilled employees. The company, with a great leadership of Mr. Ramesh Panchal & his competent workforce, is capable of manufacturing all quality spares with optimum precision levels that are compatible with world class winding machines.

The spares are manufactured in accordance with the metallurgical standards. The company also undertakes erection, overhauling, maintenance & services of winding machines and also repairs all electronic spares of the machines. The above punctual services are delivered at cost-effective rates and are made available under one roof.

The spare manufacturing and servicing business modules adhere to the most stringent quality controls to ensure the delivery of spares & services at competitive rates without compromising on the quality. The above equilibrium is maintained by a perfect combination of technical knowledge and marketing experience.



16, Shah Patel Estate, Jay Bharat Rang Shala Compound,  
Saraspur, Ahmedabad-380 024 (Guj.) INDIA  
Phone : +91 - 79 - 22777636  
Fax : +91 - 79 - 22778245  
Mobile : +91 - 9879753476  
E-mail : ambicaeng3476@yahoo.com